

PLATE TECHNOLOGY



Plate Technology

Wear parts which set standards

For decades, C.A.PICARD® has been counted among the world's best manufacturers of wear parts for specialist industries. Our knowledge of materials is based on our history - since the founding of our company in 1876, we have been ideally combining experience, know-how and development. The requirements on our production have ensured our on-going development. Our highly-qualified employees use state-of-the-art machining procedures. The results speak for themselves: We produce precise and highly wear-resistant parts and equipment, which meet the highest of demands.



Experience. Know-how. Development.
The three pillars for proficiency and success.



The OEM standard is a matter of course of us.
We demand precision.

Spare and wear parts for:

- Vertical moulding machines

Products:

- Chamber plates
- Bottom wear sheets
- Tie rods
- Shafts and cylinders
- Tie rod bushings
- Pattern locks
- Capping strips PMC
- Capping strips AMC
- Thrust bars / Side clamps
- X-Clamps
- Finger plates
- Cams
- Domes
- Sand chutes
- Heater plates

Innovation generates progress.
Technology creates quality.
For every vertical moulding machine.



Chamber plates

- Case-hardened at 62±2 HRC for outstanding protection against abrasive wear
- Precision ground surfaces and extremely precise dimensional tolerances
- Specially developed vents ensure optimum ventilation and a long service life.

Hardness HRC	62±2
--------------	------

Parallelism metric mm	0.02 (.0007")
-----------------------	---------------

Flatness metric mm	0.05 (.002")
--------------------	--------------

Surface roughness	Ra 1.6
-------------------	--------



Bottom wear sheets

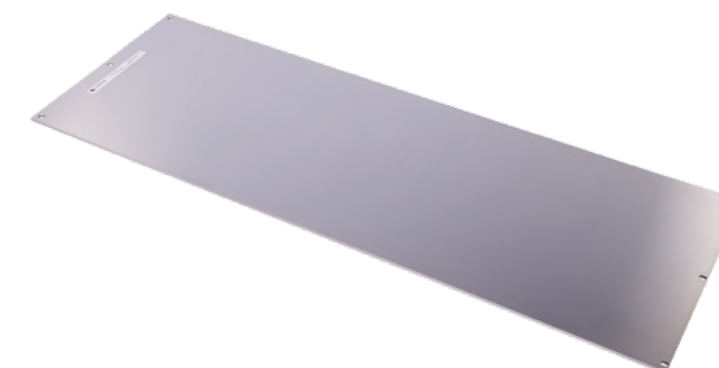
- Case-hardening and optional hard-chrome plating prevent abrasive and corrosive wear.
- Extremely fine dimensional tolerances for flatness, parallelism and surface quality

Hardness HRC	62±2
--------------	------

Parallelism metric mm	0.02 (.0007")
-----------------------	---------------

Flatness metric mm	0.05 (.002")
--------------------	--------------

Surface roughness	Ra 1.6
-------------------	--------



Tie rods

Hardened and chrome-plated

- Induction core-hardening of 60 HRC offers improved protection against impact stress and local erosion.
- Added wear protection with 30 µm hard-chrome plating
- Quick-lock nut for fast dismantling
- Sleeve programme eliminates tie rod removal – only the worn area is replaced.
- Re-chroming service for worn tie rods



Tie rod bushings

Solid or split

- Specially designed standard “one piece” tie rod bushings
- “Split” tie rod bushings that eliminate tie rod removal during maintenance including special split wipers and retaining rings
- Wear-resistant, very high grade bronze suitable for the particular application



Shafts and cylinders

- Press cylinders, accumulators, core setter rods – the complete programme for all moulding lines
- Exceptional quality and endurance due to chrome-plating up to 60 µm
- Rebuild programme along with exchange system reduces cost and inventory.



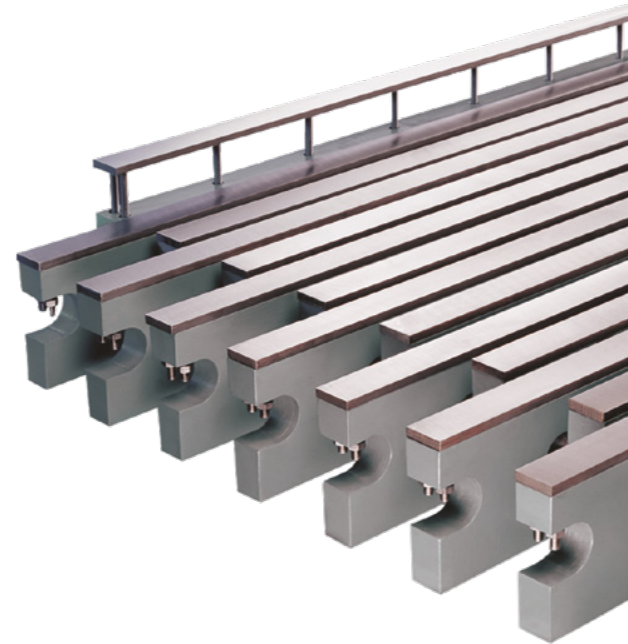
Pattern locks

- Available as complete units or individually
- Replaceable heat treated wear shoe for all Disamatic® machines
- Available for ram heads, swing plates and core setters



Capping strips PMC

- C.A.PICARD®'s state-of-the-art capping strip programme also for all PMC systems
- Reduces iron stick – spilled iron chips off easily, eliminates the need for grinding.
- Capping strips protect expensive PMC bars and enhance the mould quality with more uniform surfaces.
- Individual elements are easy to install and replace.
- Special carrier material significantly reduces warping due to heat.



Capping strips AMC

- Our capping strips improve mould transport and reduce maintenance costs by protecting the cooling line.
- Offered in widths up to 100 mm, thicknesses up to 25 mm for all AMC applications
- High grade stainless steel eliminates sand stick, and time-consuming cleaning.
- Fixing elements allow fast, easy and secure installation.

Hardness HRC	45±2
Parallelism metric mm	0.02 (.0007")
Flatness metric mm	0.05 (.002")
Surface roughness	Ra 1.6



Thrust bars / Side clamps

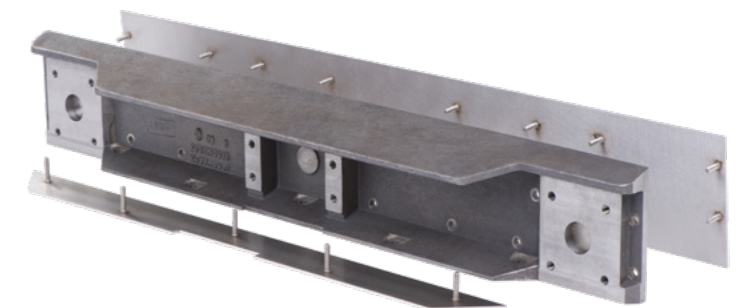
Standard

- Standard side clamps and thrust bars produced from high quality cast iron
- All parts precision machined and stress relieved



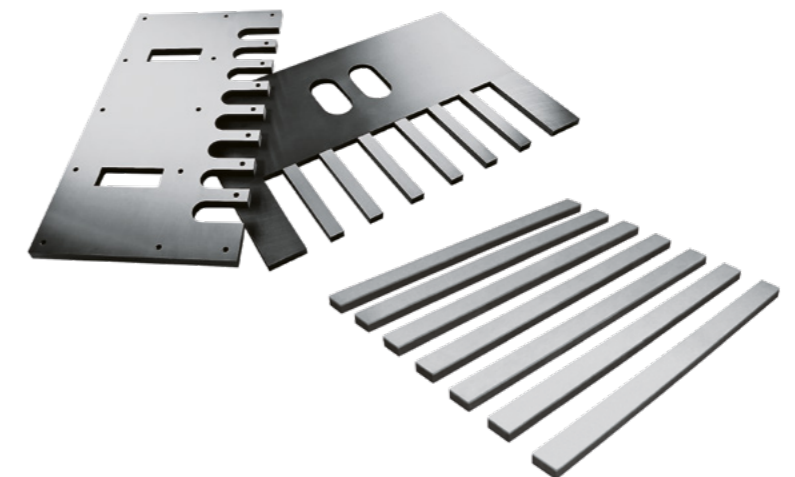
X-Clamps

- Developed by C.A.PICARD® to combat corrosion and abrasion
- Stainless-steel wear plates eliminate sand stick and time-consuming cleaning work.
- Replaceable wear plates on mould and roller side provide optimum protection and a longer life.
- Special design allows for installation without adjustments.



Finger plates

- OEM quality for all 2032, 2070 and 2130 PMC applications
- Optionally available: hard-chrome plating for extreme environments



Cams

- The “perfect pair” for smooth swing plate opening and closing movement
- Case-hardened to 62±2 HRC and precision machined
- Available for all Disamatic® machines



Domes

- Additional accessories include seals and rings.



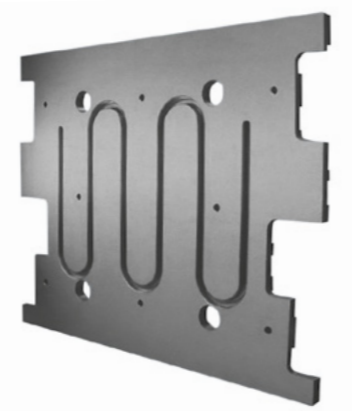
Sand chutes

- Heavy-duty 5 mm thick stainless steel construction
- Superior quality with resistance to abrasion, corrosion, and sand stick



Heater plates

- Premium “C.A.PICARD® quality” for flatness, parallelism, and surface finish of the highest quality
- A variety of material qualities provides optimum protection for each individual application.
- Optional hard-chrome plated version protects against contact corrosion.





www.picard.de



CAPICARD GmbH & Co. KG
Hasteraue 9
42857 Remscheid
Germany

Carl Aug. Picard GmbH
Hasteraue 9
42857 Remscheid
Germany

Carl Aug. Picard GmbH
Hans-Georg-Weiss-Str. 14
52156 Monschau-Imgenbroich
Germany

USG Uwe Stücke Granuliertechnik GmbH
Siemensstraße 38b
59199 Bönen
Germany

C.A. Picard, Inc.
305 Hill Brady Road
Battle Creek, MI 49037
USA

C.A. Picard Japan Co., Ltd.
2-42-6 Kamiaki
Kawaguchi City
Saitama 333-0844, Japan

C.A. Picard Japan Co., Ltd.
Kobe Branch Office
Little Brothers Rokko Bldg. 5F-D
1-3-19 Morigocho, Nada Ku, Kobe
Hyogo 657-0028, Japan

C.A. Picard Far East Ltd.
20 Dai Fu Street
Tai Po Industrial Estate
Hong Kong

C.A. Picard (Jiangmen) Co., Ltd.
Erheshan Ind. Zone, Baisha, West District
Jiangmen, P.R.C., Guangdong Province
Postcode: 529000, China

C.A. Picard Plastic (Jiangmen PRC) Co., Ltd.
Zhong Xin Road 1#, Jiaotou No. 1
Industrial Park, Jianghai Estate, Jiangmen P.R.C.,
Guangdong Province, Postcode: 529040, China

C.A. Picard (Suzhou) Representative Office
Room 1709, 17th Floor, Block 3
Suzhou International Science and Technology Building
No. 112 South YingChun Road, Chengnan Street
Wuzhong Economic Development Zone
Suzhou, Jiangsu Province, P.R.C.
Postcode: 215168, China